

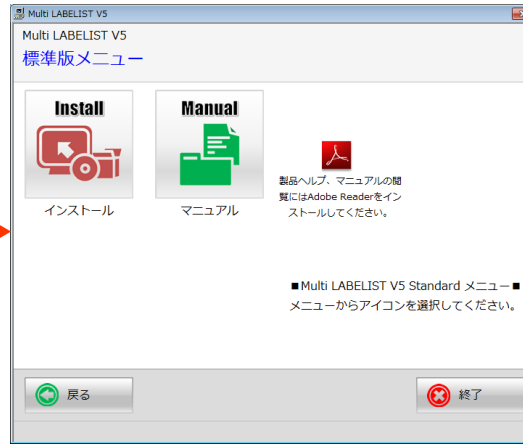
# Multi LABELIST V5 Installation step

1



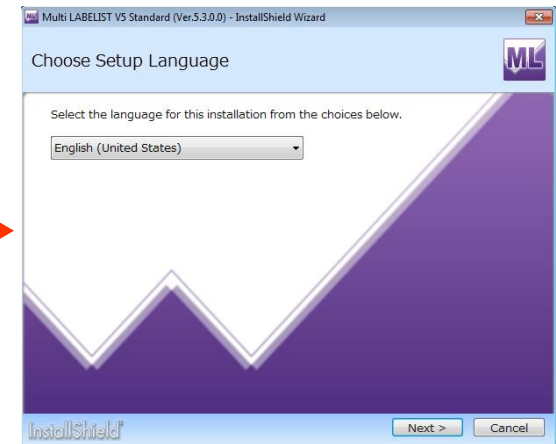
Select "Standard" or "Lite".

2



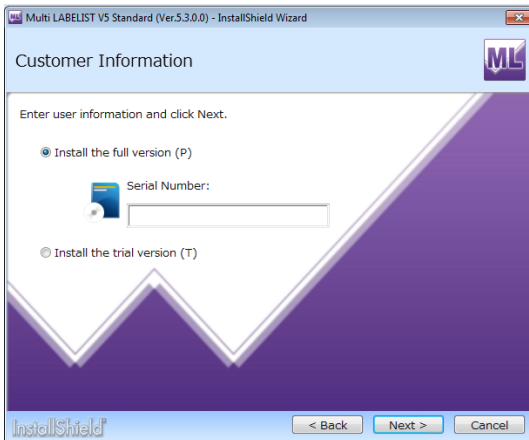
Click "Install".

3



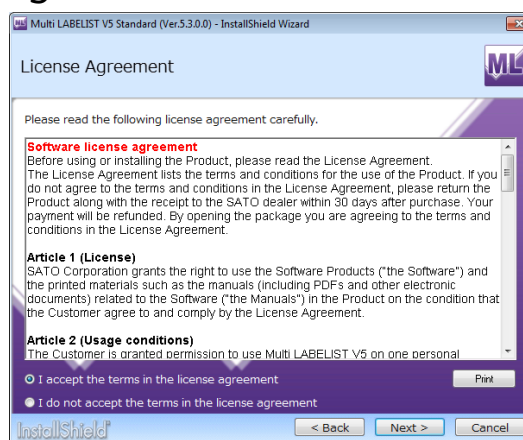
Select language from combo box.

6



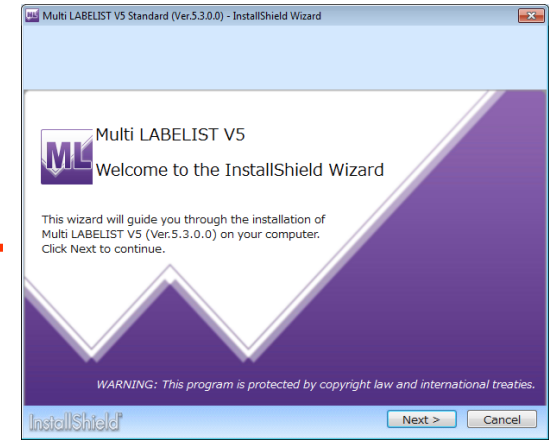
Enter "Serial Number" and Click "Next".  
Note: The Serial Number is stamped on the label on the package.

5



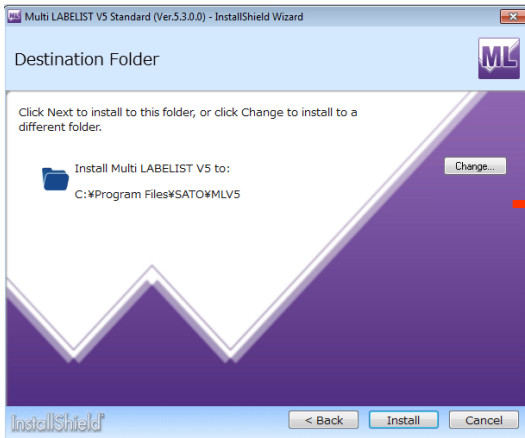
Click "Next".

4



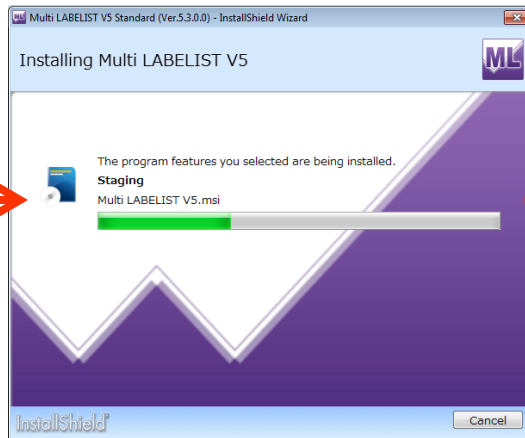
Click "Next".

7



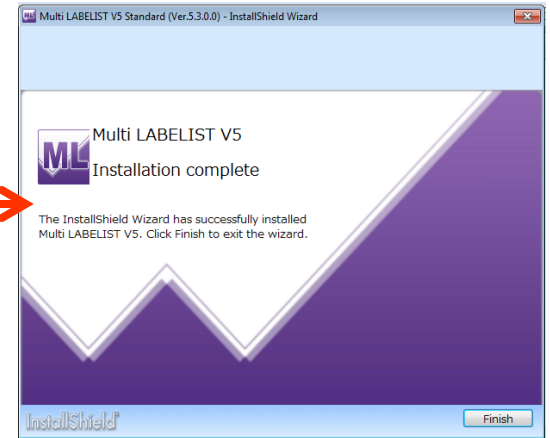
Click "Install".

8



Displaying progress bar.

9



Click "Finish" to complete setup.